

QEd Quantum Edge ® Device



CHALLENGES

- An increase in the complexity of energy flows managed by the grid caused by growing electrification and distributed generation
- Technological transformation of the power distribution network to increase flexibility, grid resilience and quality of service

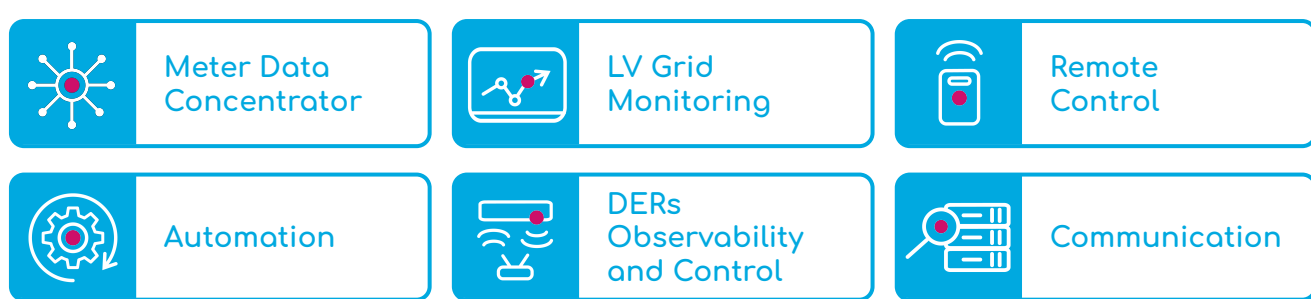
OUR SOLUTION

QEd - Quantum Edge ® Device is our edge platform for substation virtualization.

VALUE PROPOSITION

Thanks to its decentralized computational capability, this all-in-one solution performs all the main functionalities of electrical substations by virtualizing their components into edge applications. QEd addresses the main challenges of the grid such as automation and DER integration, outages prevention and reduction, IoT sensor integration, metering, remote monitoring and control.

QEd APPLICATIONS DOMAINS

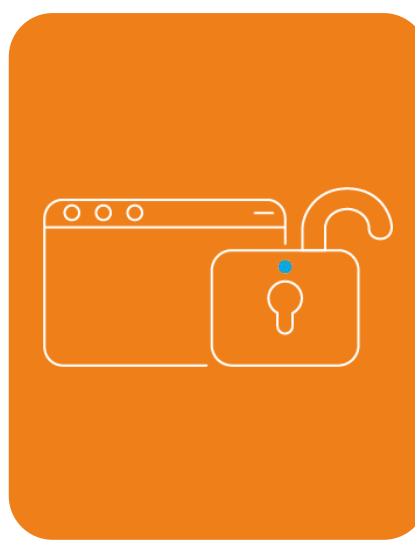
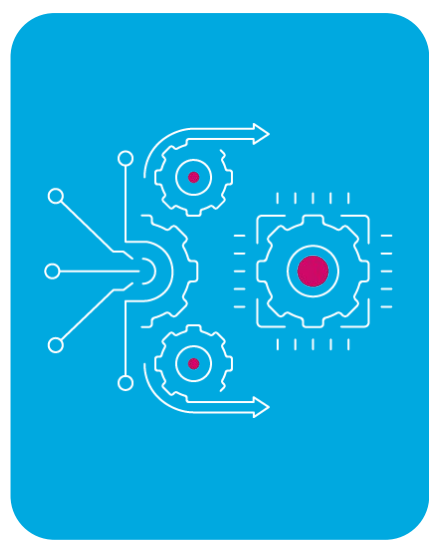


DISTRIBUTING INTELLIGENCE AT THE EDGE UNLOCKS NEW POTENTIAL FOR GRID OPERATIONS

EDGE INTELLIGENCE

VIRTUALIZATION

OPEN PLATFORM



Join our Co-Creation Program!

Gridspertise has launched a Co-Creation Program to collaborate with pioneering DSO customers and other players from the network ecosystem with the aim to develop new applications and enrich QEd functionalities.

Are you a DSO, an App developer or a Hardware manufacturer interested in our co-creation program? Join us!

GRIDSPERTISE

Gridspertise offers end-to-end cloud-edge platform solutions and services to accelerate the digital transformation of electricity distribution grids in three main areas: metering and grid edge digitalization, network infrastructure digitalization, field operation digitalization. The Company's portfolio is designed as an open ecosystem, easy to integrate with legacy systems, combining intelligent grid devices with ready-to-use modular applications, running at central level as well as on the edge.

Born in 2021 leveraging on its parent company Enel's over 20 years of experience, Gridspertise today is jointly controlled by the Enel Group and the investment manager CVC Capital Partners. Gridspertise is present in different geographies, headquartered in Italy, offices in Spain, Brazil, India and the United States. Target markets include Europe, Latin America and North America. Asia-Pacific and Africa are in a second wave as they will drive infrastructure upgrade projects in the near future.